



Realize. A better world through research

October 13, 2015

CIHR Project Scheme

Research Office
Heidi Smithson
Health Research Funding Officer

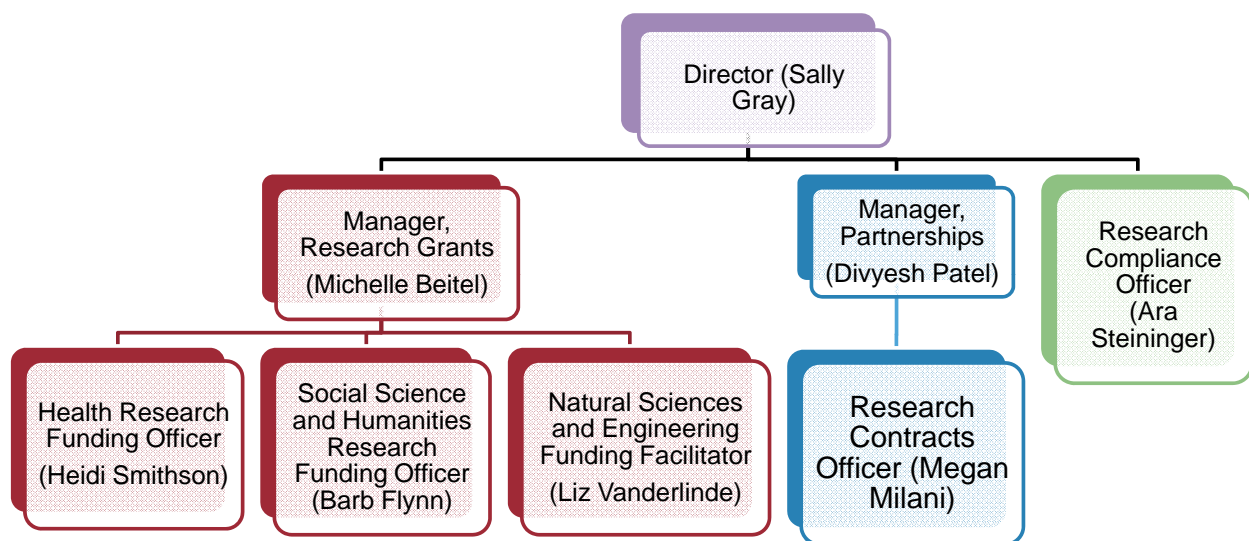
Presentation Overview

- Research Office and Services
- General Application Procedures
- Brief overview of new CIHR Funding Schemes
- Results of CIHR Foundation Scheme 2014-15 (what got funded and where did the funding go?)
- Introduction to the Project Scheme
- Remaining CIHR Legacy programs

Research Office

- New name: **Research Office**
- New email: **research.office@uregina.ca**
- New website: **www.uregina.ca/research**
- New personnel
- Grant Submission: Review and Signatures
- New Funded Research Approval Form

Research Office



General Services Provided by Research Office

- Grant Review:
 - proof reading, eligibility, fit with criteria
- Budgets:
 - We will help develop your budget
 - Check for eligible expenses
- Assistance with Ethics, Animal Care applications
- Institutional Signatures

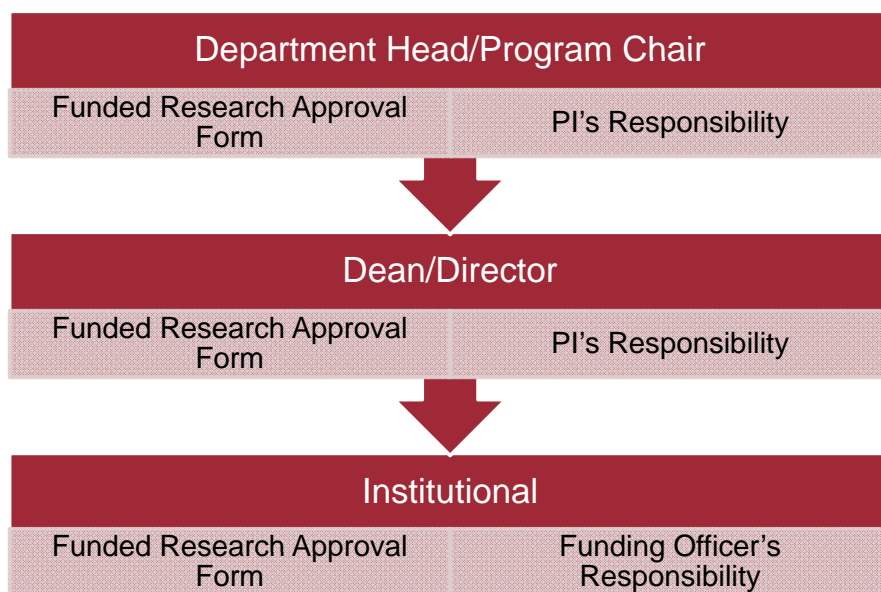
Application Process

- Notification of Intent to Apply
- Work with Research Funding Officer (esp. on budget)
- Internal review
 - Colleagues
 - Dept. Head
 - Dean
- Obtain signatures
- Submit to research office by internal deadline
 - usually 2 weeks ahead of external deadline for major applications

Signatures

- Research Office approval is required for **ALL** research-related funding prior to application:
 - Even if the funder does not require signatures
 - Even if the application is submitted electronically with eApproval
 - Even if it is not through a formal application process
- Dept. head and dean's signatures required before institutional signature or e-approval
- Use **Funded Research Approval Form**

Signature Process



Funded Research Approval Form

- Replaces old Supplemental Signature Page
- Collects additional information useful for the Research Office to process successful applications
- Allows deans and department heads to quickly assess any resource commitments from the faculty or dept.

Who signs the Funded Research Approval Form?

- PI
- Dept. Head (where appropriate)
- Dean/Director or designate
- Co-applicants and their deans/directors and dept. heads sign **only if their departments or faculties will be committing resources**
 - (e.g., teaching releases, student stipends)

Changes to CIHR Programs and Review Process

- Open Programs rolled into two Schemes:
 - Foundation Scheme and Project Scheme
- Retained (increased) directed/targeted funding opportunities
- Response to:
 - Applicant and reviewer feedback - onerous application and review processes
 - Desire to improve success rates
 - Too many indistinguishable medium quality applications
 - Too many applicants not competitive compared to peers

Key Changes

Additional Changes

- Shorter, structured application forms
- Multi-stage virtual review
- Schemes versus open programs
- College of Reviewers

New CIHR focus

- Targeted research funding is increasing
- Emphasis on multi-disciplinarity
- Greater focus on patient-centred and individualized healthcare
- Greater focus on prevention

What does CIHR say the changes mean?

- Shorter and fewer application processes
- Improved matching of reviewers to applications
- Greater flexibility in how funds are spent
- Better incentive to serve as a reviewer

Foundation Scheme

- Support a broad base of health research leaders across all career stages, areas, and health-related disciplines with a **demonstrable track record of excellence and impact in their field of study**;
- Develop and maintain Canadian capacity in health research and other related fields;
- Provide **research leaders** with the flexibility to pursue novel and innovative lines of inquiry;
- Contribute to the creation and application of health-related knowledge through a wide range of research and/or knowledge translation activities, including relevant collaborations.

Project Scheme

- Support a **diverse portfolio of health-related research and knowledge translation projects at any stage**, from discovery to application, including commercialization;
- Contribute to the creation and use of health-related knowledge;
- Promote relevant collaborations across disciplines, professions, and sectors.

The Two Schemes

Foundation Scheme

- Funds large-scale, long-term **programs** that have already been successfully funded
- Targets high-achieving researchers with proven track-records in research program management and high-impact KT.

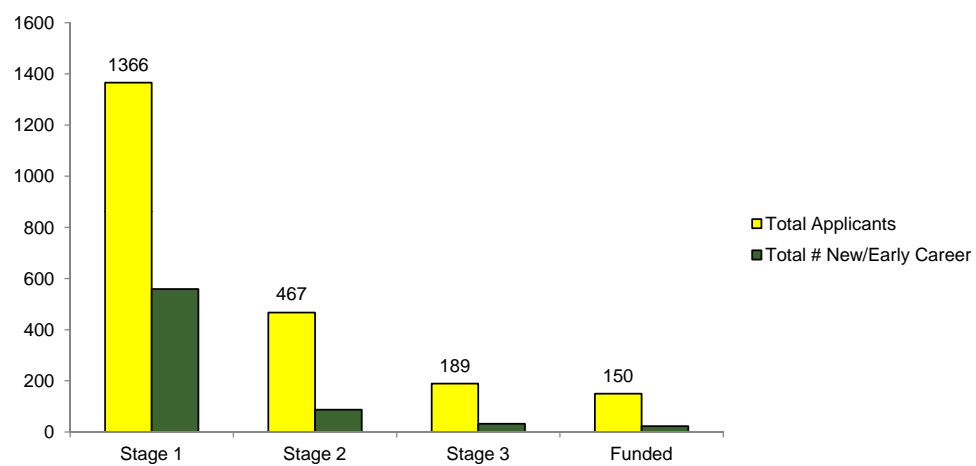
Project Scheme

- Targets projects of any scale that meet the vision/mandate of CIHR.
- Special consideration for Partnered/Integrated Knowledge Translation (iKT) projects

When should I apply for a Foundation Scheme?

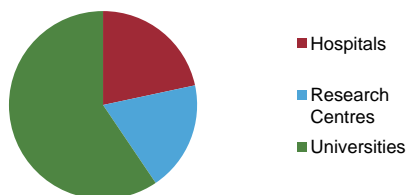
- Once you've outlined a long-term research program with high-impact objectives (national/international scale)
- Once your **program** has been successfully funded
- Once you've established a track record of publications and HQP

National Results: Foundation Scheme

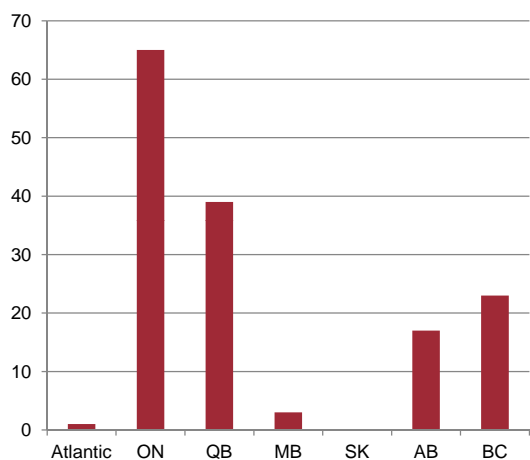


Size and Distribution

- Range:
 - ~\$450,000 - \$9.7 million
- Total investment:
 - \$408.9 million over 7 years



Number of Applications Per Institution Type



Number of Foundation Schemes Awarded Per Province

What got funded?

- Very broad, multi-disciplinary programs:
 - “From correlation to causation in genomics: identifying mechanisms underlying disease”
 - “Arthritis Care for Indigenous Populations”
 - “Deciphering the causes of, and developing interventions to reduce, cardio-metabolic risk factors among ethnic groups in Canada”
 - “Preventing Child Maltreatment: Changing a Child's Trajectory, Improving Health, and Strengthening Families”

Strategy for Achieving Success with Foundation Scheme

- Collaboration
 - Bring early- and mid-career researchers together with later-career researchers
 - Foster external collaborations
- Career Planning
 - Strategies for graduating HQP, publishing, other KT
- Focus on getting Project Schemes

Project Scheme

Important Dates

Registration Deadline	January 18, 2016
Application Deadline	March 1, 2016
Notice of Decision	July 15, 2016
Funding Start Date	July 1, 2016

Objectives

- Support a **diverse portfolio of health-related research and knowledge translation projects at any stage**, from discovery to application, including commercialization;
- Contribute to the creation and use of health-related knowledge;
- Promote relevant collaborations across disciplines, professions, and sectors.

Funding Details

- \$50 K - \$750 K / Year
- 1 – 5 years

Special Consideration

- Partnered/Integrated KT / Commercialization
 - minimum threshold of funded knowledge translation and commercialization projects that include a partnered/iKT approach
 - Identify project as iKT/Commercialization
 - Evaluation is built into the overall evaluation process

Partner Participation

- No formal requirements for partnering
- Nature of the project will dictate whether reviewers would expect a commitment (cash or in-kind) from:
 - Interested or engaged knowledge user(s)
 - Commercialization partners
 - Others

Eligibility Criteria

- Nominated Principle Applicant (NPA) must be either a knowledge user or an independent researcher
- If the NPA is a knowledge user, the application must also include an independent researcher as a co-PA.
- You may have multiple PAs but it is not required
- Trainees can be co-applicants
- **There is no limit to the number of applications an individual can submit to the Project Scheme.**
- Individuals who hold a Foundation Scheme grant in the role of Program Leader are not eligible to apply to the Project Scheme in the role of Nominated Principal Applicant or Principal Applicant.

Application Procedure

- 1 application and 2 review stages
- Stage 1 review
 - Structured evaluation, remote review, ranking on criteria by matched reviewers
 - Consolidated into an overall ranking
- Stage 2 review
 - Face-to-face discussion by interdisciplinary review committee
 - Makes final recommendations for funding

Adjudication Criteria

- **Criterion 1 – Concept (50%)**
 - Quality of the Idea (25%)
 - Importance of the Idea (25%)
- **Criterion 2 – Feasibility (50%)**
 - Approach (25%)
 - **Expertise, Experience and Resources (25%)**
- **Budget**
 - The budget requested will not be factored into the scientific assessment of the application;
 - CIHR will seek the advice of peer reviewers on the budget requested.

What should you focus on?

- Idea
 - Clear, interesting, well articulated idea well-supported by the literature
 - Strong rationale
 - Realistic, scientifically-sound methodology/approach

What to consider

- What is your hypothesis/research question?
- Why is it important? How will it generate tangible impacts (now or in the future) on Canadians' health or the health care system? What will answering the research question provide/achieve?

Approach/Methodology

- What approach methodology will you use to answer the research question / test your hypothesis?
- What objectives will you set to ensure you are achieving the answer to the research question?
- How will you meet those objectives?
- Have you included/consulted patients, knowledge users and/or other stakeholders?
- Do you have the expertise to complete all aspects of the project or do you need to include a co-applicant or collaborator with that expertise?

Knowledge Translation and HQP

- How will you ensure the best quality and broadest dissemination of your results?
- How will you achieve the best possible knowledge user research uptake?
- How will you incorporate student training into your project?
- Describe in detail the value of the training/training environment – be specific.

Knowledge Users and Patients

- CIHR is increasing emphasis on interdisciplinarity and stakeholder inclusion
- Knowledge user- and client/patient-informed research is emphasized
 - They want to see patients and knowledge users and other stakeholders taking part in shaping the research questions and approaches.

Budget

- Let the Research Office help
- Make sure to include benefits in any RA or PDF salaries
- Remember that PA salaries are not eligible expenses
- Request enough money to do the work but not more than would be considered reasonable for you to need

What is the plan for integrating existing legacy open programs?

- The anticipated application deadlines for the final competition for each of these programs are:

Legacy Open Program	Competition Launch	Anticipated Application Deadline
Knowledge Synthesis	June 2015	January 2016
New Investigator Salary Awards	July 2015	December 2015

Knowledge Synthesis

- Knowledge syntheses and scoping reviews that will contribute to the use of synthesized evidence in decision-making and practice.
- Knowledge synthesis - \$100k for up to 1 year
- Scoping review - \$50 K for up to 1 year

New Investigator Salary Award

- \$60 K / yr up to 5 years
- Eligibility: Nominated principle applicant must:
 - have obtained a full time professional degree (MD, DVM, etc.) or PhD degree within the last 10 years.
 - full-time academic or research appointment, or a formal commitment to a full-time academic or research appointment at an eligible institution.
 - full-time appointment as an independent researcher (i.e.: faculty appointment providing eligibility to apply for grants and/or supervise trainees) for a period of 0 to 60 months (part-time and leaves of absence can be considered)
 - Written commitment of 75% protected research time
 - Hold peer-reviewed operating funds as nominated PA or PA

Let's work together

- Please start contacting me as soon as possible so that we can work together on your proposal.
- This will allow me the opportunity to potentially make connections between applicants with similar interests.

Questions?